



Probe Camera Cable Options

- 5.5mm Dual View Camera
- 8.0mm Dual View Camera
- 3.9mm Single View Camera
- 7.6mm Single View Camera

STAN ONE[®] Series

SVBS300

BORESCOPE VIDEO INSPECTION CAMERA WITH 5-INCH HD SCREEN

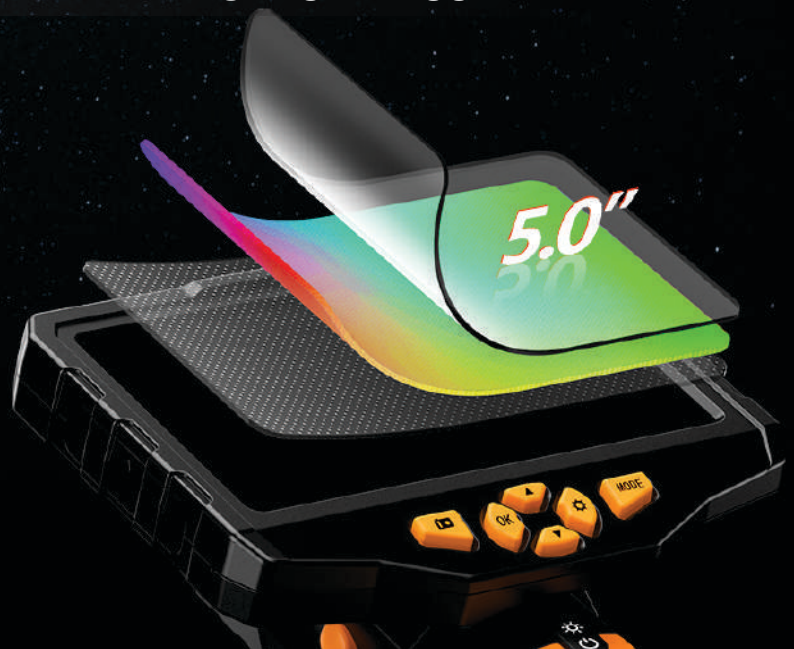
LARGE SCREEN

5 inches Display, IPS HD technology
Image More Brighter and Clearer

5.0
inch

IPS
Screen

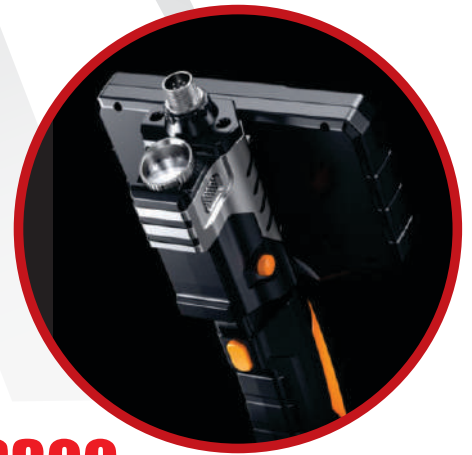
HD
Display



SVBS300



8MM-5M-DL



SVBS300 PROFESSIONAL, PISTOL GRIP, DUAL-LENS INSPECTION CAMERA

The **SVBS300** is a compact and versatile professional inspection system, designed for portability and ease of use. Equipped with a **5-inch HD screen**, this handheld device offers a range of camera lens and probe options to cater to various inspection needs. Its **robust and ergonomic pistol grip design** allows for **single-handed operation**, with all control keys conveniently accessible.

Featuring a vibrant **5-inch IPS HD display**, the **SVBS300** provides instant live inspection video feedback. The device comes with a **built-in 32GB memory card** for seamless image capture with **1080HD resolution and video recording at 720P HD resolution**. The probes are equipped with **adjustable LED lights**, ensuring optimal visibility in even the darkest inspection areas. Additionally, the adjustable handle adds extra comfort during operation, and it incorporates an integrated LED flashlight for added convenience in low-light conditions.

The **SVBS300** is a reliable inspection tool designed to meet the demands of professionals in various fields.

SVBS300

STAN ONE®

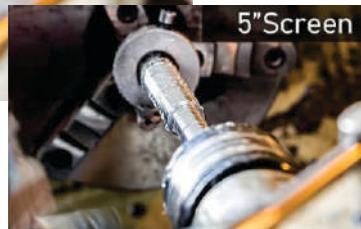
Monitor Features



5" IPS Screen is 3 Times Clearer than 4.3inch

5"Screen
854x480(400K Pixel)

4.3"Screen
480x272(190K Pixel)



Tempered Glass

IPS LCD
Backlight

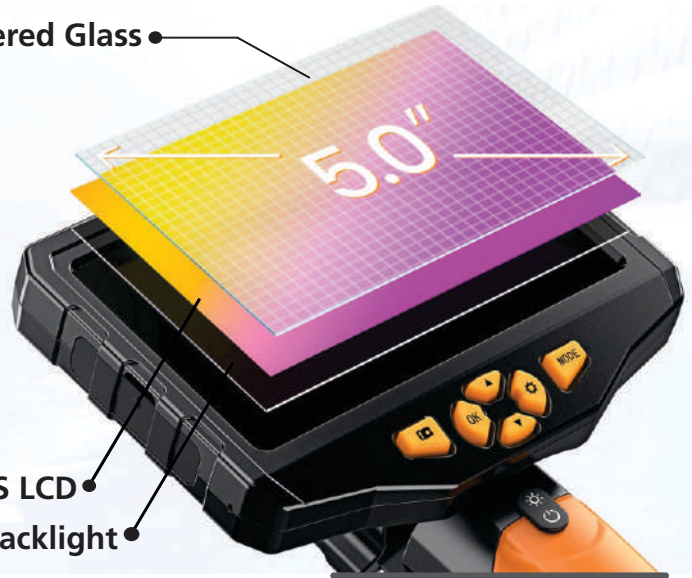


PHOTO AND VIDEO

- 5-inch Colour IPS Display
- Tempered Glass Screen

180° Image Rotation



Built-in 32GB
Memory Card



IP67 Waterproof



Replaceable
Different Cable



LED Ring Light
Illuminates the
Darkest Areas



• 5000mAh Battery
• 4 Hours Working Time



Adjustable Handle



Built-in 32GB
TF card

SVBS300

DUAL-LENS FLEXIBLE INSPECTION CAMERA PROBES

Semi-Rigid with Copper Wire



Camera



Anti-Flare Glass, 99.99%
Transmittance

Front-View Camera

Side-View Camera

Upgraded
Waterproof
Gooseneck
Cable



DUAL LENS
HD Camera Probes

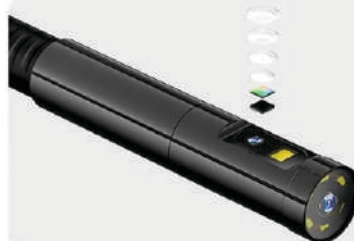
Front Camera

Side Camera



Front-View Camera

- Focal Distance 30-80mm
- 70° View Angle
- 6 rings LEDs



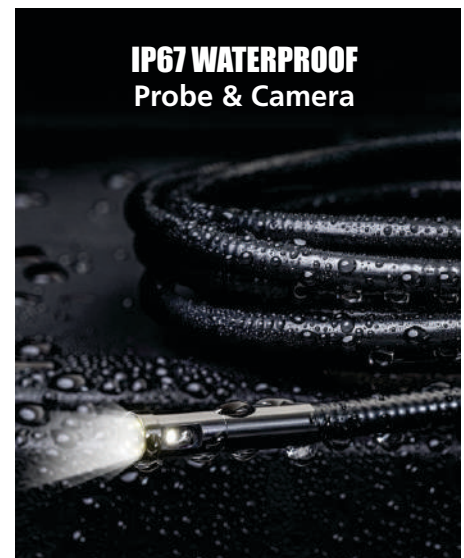
Side-View Camera

- Focal Distance 20-50mm
- 70° View Angle

6 Adjustable LED Lights



IP67 WATERPROOF
Probe & Camera



SVBS300

Specification



Monitor

Screen	5-inch IPS HD Display
Screen Resolution	854x480 pixels (FWVGA)
Image Capturing Resolution	1920x1080 Pixels (JPG)
Video Recording Resolution	1280x720 Pixels (MOV)
Storage	32GB Micro SD Card
Ports	Micro USB Charging Port / Micro SD Card Slot
Power Source	5000mAh lithium Battery
Battery Life	5-6 Hours
Operating Temperature	32° to 113°F (0° to 45°C)
Flash Light (For Working in Dark Area)	1 Watt Cree LED
Adjustable Handle	Yes

Probe Options

Lens Type	Probe Diameter	Probe Length
Dual, Front & Side	5.5mm	3m
Dual, Front & Side	8.0mm	5m
Single Lens, Front	3.9mm	1m
Single Lens, Front	7.6mm	3m
Probe Stiffness	Semi Rigid	
Depth of View (Front Camera)	30 mm to 100 mm	
Depth of View (Side Camera of Applicable)	20 mm to 50 mm	
LED Light	6 Adjustable High-Intensity LEDs	
LED Adjustable Step	Off + 3 Step	
Rotation	180°	
Viewing Angle (FOV)	70°	
Megapixel Camera	1.0 Megapixel	
Water Proof Rating	IP67	



SVBS300



Multiple Application

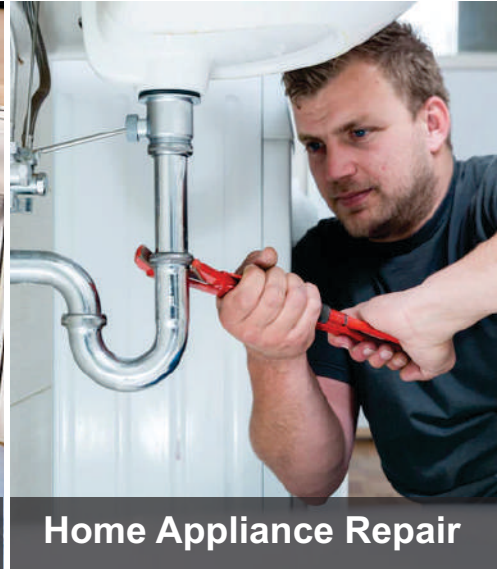
Nondestructive inspection of hard-to-reach or risky places



Automotive Maintenance



House Inspection



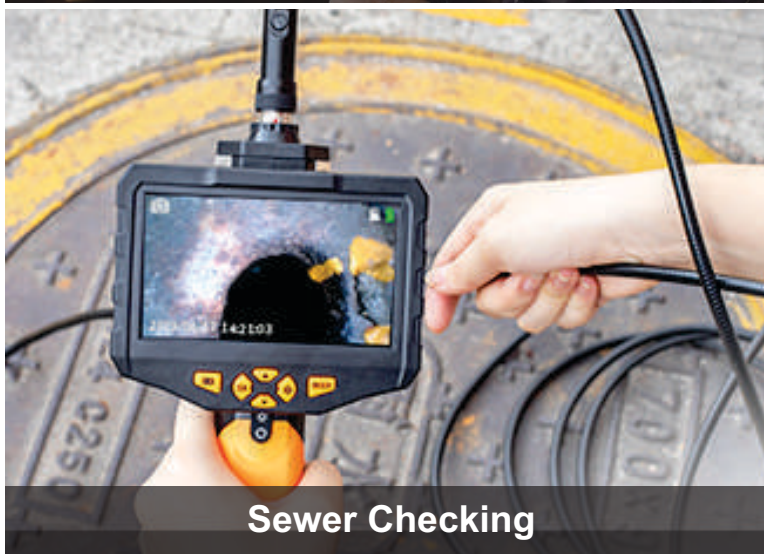
Home Appliance Repair



Pipeline Inspection



Air Conditioning Inspection



Sewer Checking



Mechanical Inspection

SVBS300



Accessories & Packing



Hook



Magnet



Mirror



Carry case

Monitor



Camera Probe



Micro USB
Charging Cable



User
Manual





**Professional
Grade
Products**

**Best In Class
Warranty
Programmes**

**Product &
Service
Training**

Regd. Office:
Asian Contec Ltd.
Asian Centre, B-28, Okhla Industrial Area, Phase-1,
New Delhi -110020, India.

Contact Nos.:
Tel : +91-11-41860000 (100 Lines),
Direct Sales Helpline : +91-11-41406926
Web : www.stanlay.in www.stanlay.com
email: sales@stanlay.com

Works :
Asian Contec Ltd. 13/7,
Mathura road, Faridabad, Haryana, India

Regional Offices :
• Mumbai • Bengaluru • Hyderabad • Vadodara
• Lucknow • Patna • Bhubaneshwar • Guwahati

Sales Channel Locations: • Chennai

www.stanlay.in

**Quality
Management
System**

ISO 9001: 2015

1-QSC202101102

